

**3 BED / 2.5 BATH**

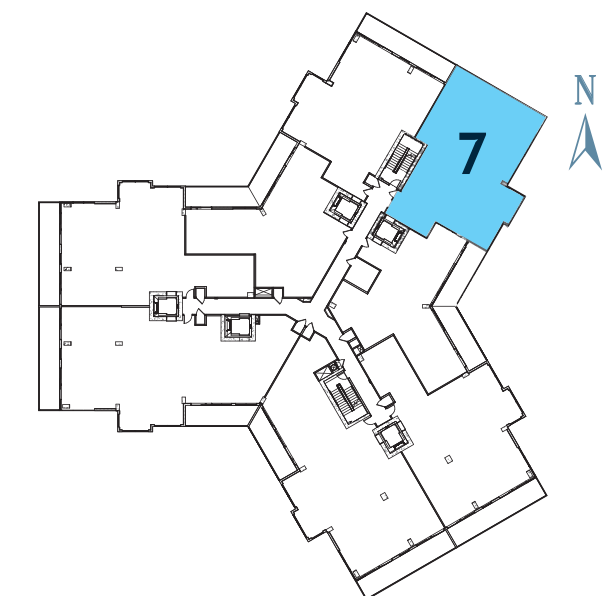
Conditioned 1,984 sq. ft.

Terraces 316 sq. ft.

**Total Living 2,300 sq. ft.**

Conditioned space varies from 1,925 sq. ft. to 1,985 sq. ft., depending on the selected floor. Private elevator is not available on floors 2-5.

Floorplan featured from 5th floor; interior living space increases on each elevated floor. Cascade Reverse is available on floors 2-5 only. Please see sales associate for specific square footage and dimensions of each floor's available floorplans.



Sketches and illustrations are artist's renderings. Details and field variations are subject to change. All dimensions are approximate and all floor plans and development plans are subject to change. Community features, amenities and pricing are approximate and subject to change without notice. Developer reserves the right to replace with items of equal value. There are various methods for calculating the total square footage of a condominium unit, and depending on the method of calculation, the quoted square footage of a condominium unit may vary by more than a nominal amount. The dimensions stated in this brochure are measured to the exterior boundaries of the exterior walls and the centerline of interior demising walls and, in fact, are larger than the dimensions of the "Unit" as defined in the Declaration of Condominium for Marina Pointe which is measured using interior measurements.